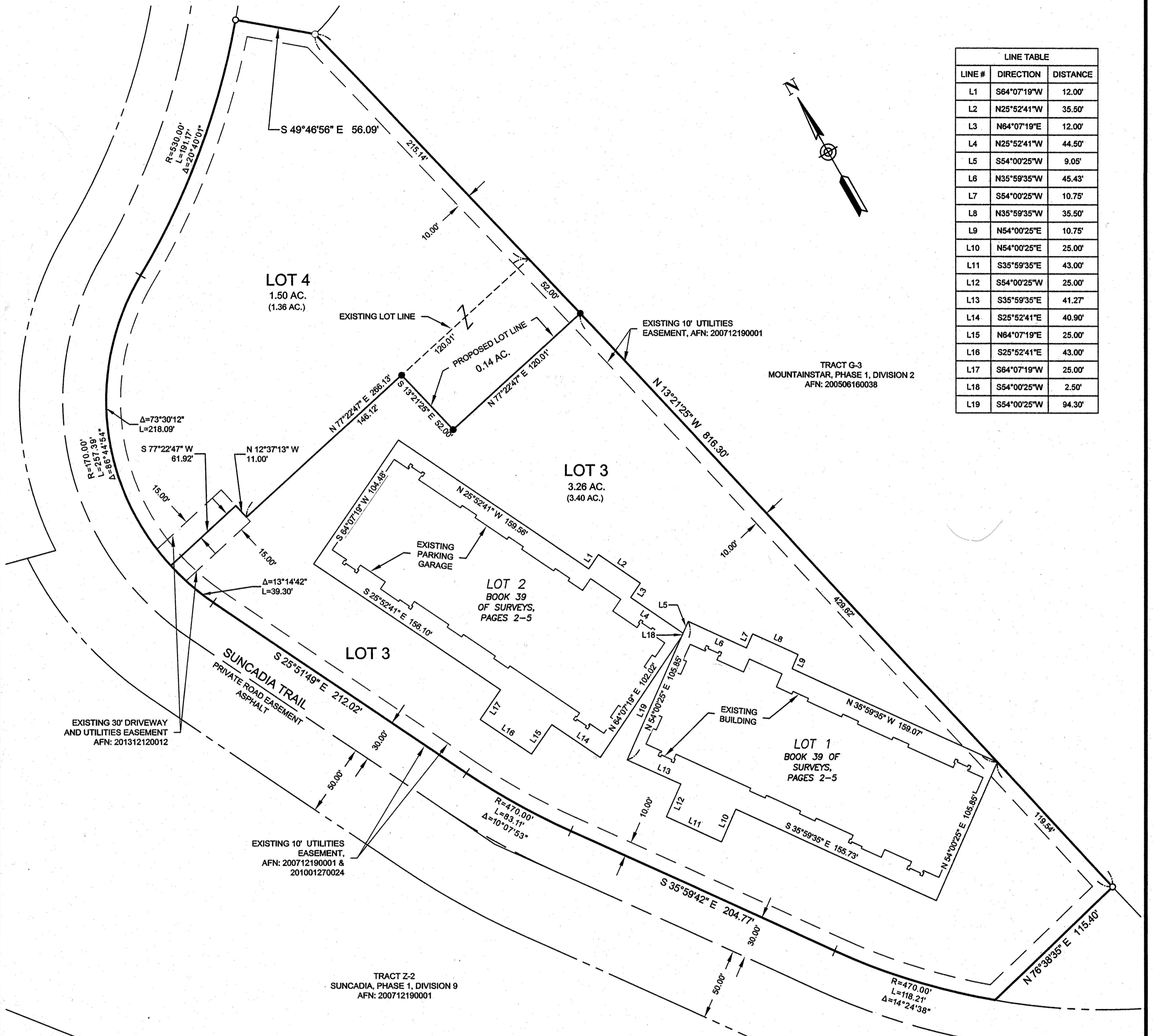




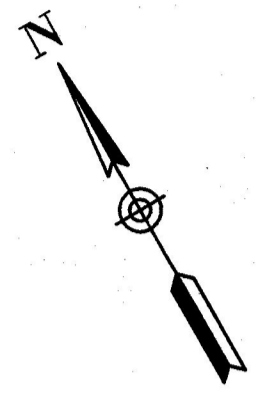
BOUNDARY LINE ADJUSTMENT

SUNCADIA - PHASE 1, DIVISION 12

A PORTION OF THE SW 1/4 OF SECTION 19, T. 20 N., R. 15 E., W.M.,
 KITTITAS COUNTY, WASHINGTON

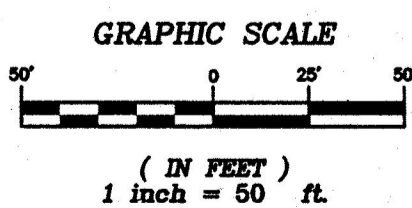


LINE TABLE		
LINE #	DIRECTION	DISTANCE
L1	S64°07'19"W	12.00'
L2	N25°52'41"W	35.50'
L3	N64°07'19"E	12.00'
L4	N25°52'41"W	44.50'
L5	S54°00'25"W	9.05'
L6	N35°59'35"W	45.43'
L7	S54°00'25"W	10.75'
L8	N35°59'35"W	35.50'
L9	N54°00'25"E	10.75'
L10	N54°00'25"E	25.00'
L11	S35°59'35"E	43.00'
L12	S54°00'25"W	25.00'
L13	S35°59'35"E	41.27'
L14	S25°52'41"E	40.90'
L15	N64°07'19"E	25.00'
L16	S25°52'41"E	43.00'
L17	S64°07'19"W	25.00'
L18	S54°00'25"W	2.50'
L19	S54°00'25"W	94.30'

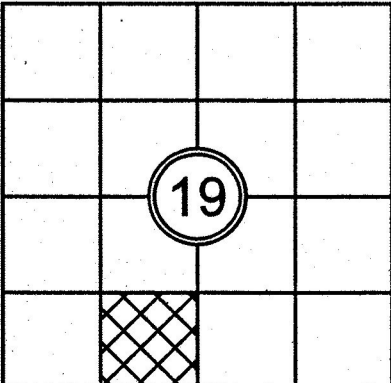


LEGEND

- FOUND 5/8" IRON ROD & CAP, "ESM"
- SET 5/8" IRON ROD & CAP, LS 45503
- () RECORD INFORMATION
- AFN AUDITOR'S FILE NO.

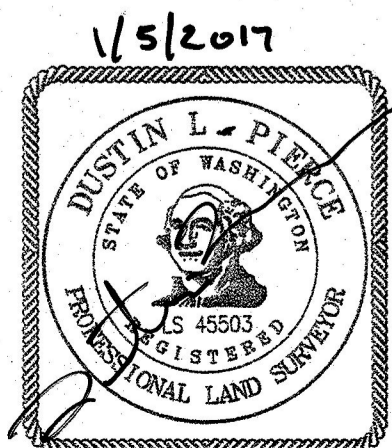


INDEX LOCATION
 SEC. 19 T. 20 N.R. 15 E. W.M.



SURVEYOR'S CERTIFICATE

THIS MAP CORRECTLY REPRESENTS A SURVEY MADE BY ME OR UNDER MY DIRECTION IN CONFORMANCE WITH THE REQUIREMENTS OF THE SURVEY RECORDING ACT AT THE REQUEST OF JEFF HANSELL IN JAN 2017.
 DUSTIN L. PIERCE 1/5/2017
 DATE
 CERTIFICATE NO. 45503



AUDITOR'S CERTIFICATE 201701060023

FILED FOR RECORD THIS 6 DAY OF JAN 2017 AT 11:50 A.M.
 IN BOOK 40 OF SURVEYS AT PAGE 194 AT THE REQUEST OF

DUSTIN L. PIERCE
 JERALD V. PETTIT
 County Auditor Deputy County Auditor

Encompass ENGINEERING & SURVEYING

Western Washington Division
 165 NE Juniper Street, Suite 201 • Issaquah, WA 98027 • Phone: (425) 392-0250 • Fax: (425) 391-3055
 Eastern Washington Division
 407 Swiftwater Blvd. • Cle Elum, WA 98922 • Phone: (509) 674-7433 • Fax: (509) 674-7419

BOUNDARY LINE ADJUSTMENT

PREPARED FOR
 HIGHWAY PARK 9, LLC
 A PORTION OF THE SE 1/4 OF THE SW 1/4 OF
 SECTION 19, TOWNSHIP 20 NORTH, RANGE 15 EAST, W.M.
 KITTITAS COUNTY - WASHINGTON

DWN BY	DATE	JOB NO.
DLP	1/2017	16080
CHKD BY	SCALE	SHEET
GW	1" = 50'	1 OF 2